

# Pennsylvania Avenue East Small Area Plan

COMMUNITY VISIONING CONVERSATION: VIBRANT PUBLIC REALM

May 26, 2021 | 6:30-8:00 p.m.

Commissioner Nash, 7Bo4

Gabe Onyeador, DDOT

Sarina Accime, DMPED

Chris Shaheen, Rita Abou Samra, Ryan Hand, Kristin Calkins, Jordan Chafetz, Deborah Crain-Kemp, Ashley Stephens, and Faith Broderick,  
OP



# Agenda

6:30-6:45pm **About the Pennsylvania Avenue East Small Area Plan**

6:45-7:45pm **Community Visioning Conversation**

7:45-8:00pm **Recap, Next Steps, and Q&A**

- Watch the broadcast online: [publicinput.com/PennAveSEPlan](https://publicinput.com/PennAveSEPlan), 'Events' tab
- Join the meetings online: [tinyurl.com/PennAveVisioning](https://tinyurl.com/PennAveVisioning)
- Join the meetings by phone: **202-860-2110 (meeting #: 160 489 9034)**



# About Small Area Plans

## Small Area Plans

**Small Area Plans supplement the Comp Plan** by focusing on the neighborhood and block level. Small Area Plans **establish a vision for the neighborhood** and build on the guidance established in the Comp Plan.

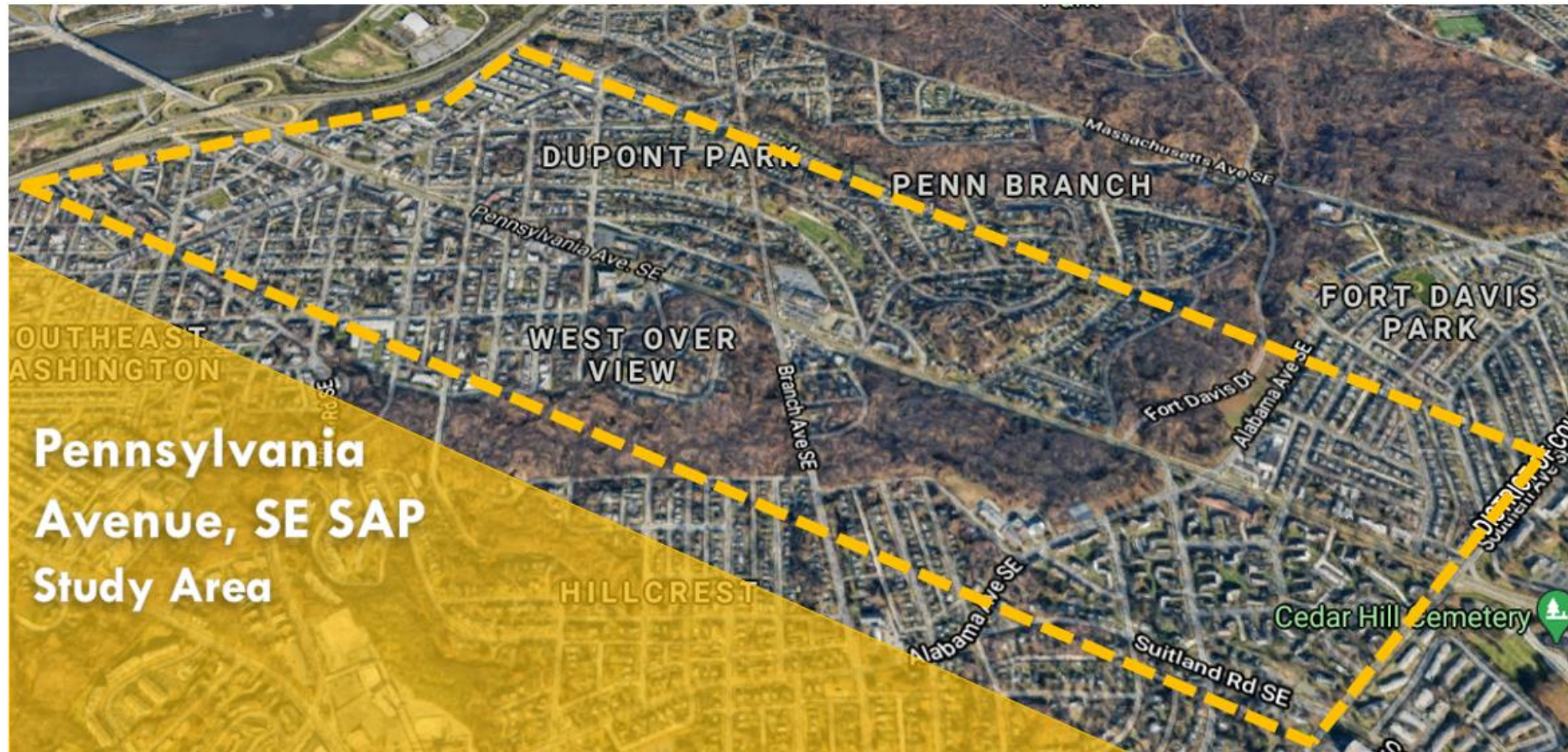
- Identify strategic priorities, gaps, and opportunities
- Provide neighborhood specific recommendations
- Guide future development and investment
- Are approved by Council as legislation





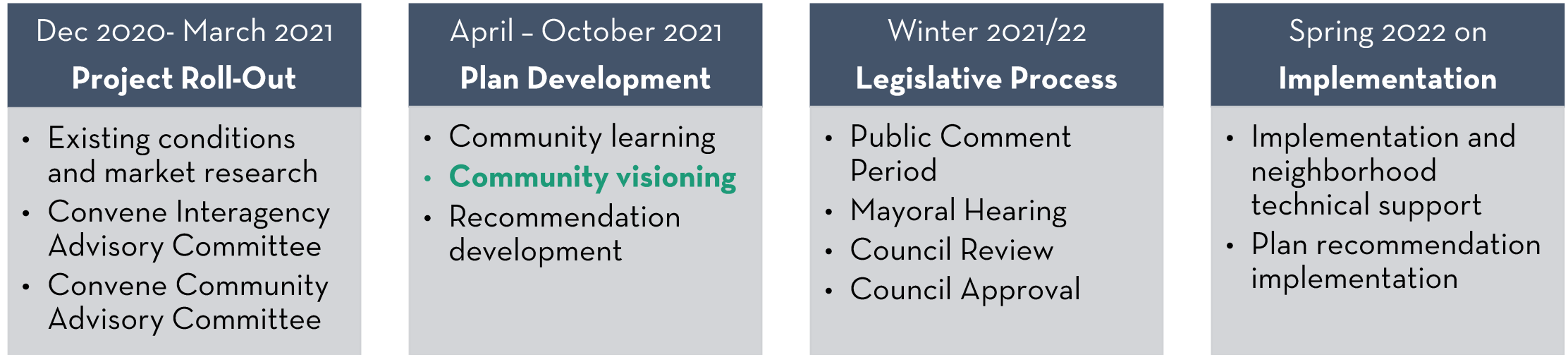
# About the Pennsylvania Avenue East Small Area Plan

With community support and involvement, OP will develop an updated vision and implementation plan for the Pennsylvania Avenue East corridor.



# Project Timeline

We are here!



# Community Visioning Conversation Schedule

**Vibrant Public  
Realm**

May 26  
6:30-8:00 p.m.

**Transportation  
& Access**

June 2  
6:30-8:00 p.m.

**Housing  
Affordability &  
Opportunities**

June 9  
6:30-8:00 p.m.

**Retail & Economic  
Development**

June 16  
6:30-8:00 p.m.



# Pennsylvania Avenue East Small Area Plan Goals

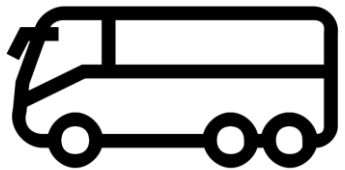
**The SAP will establish a framework that will guide development and reinvestment in the neighborhood to meet the following goals:**



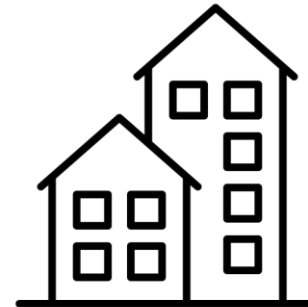
Encourage economic development and retail opportunities



Enhance a safe, accessible, and vibrant public realm



Improve transportation access and connectivity



Explore housing opportunities and social and economic resiliency strategies

# Safe, Accessible, Vibrant Public Realm

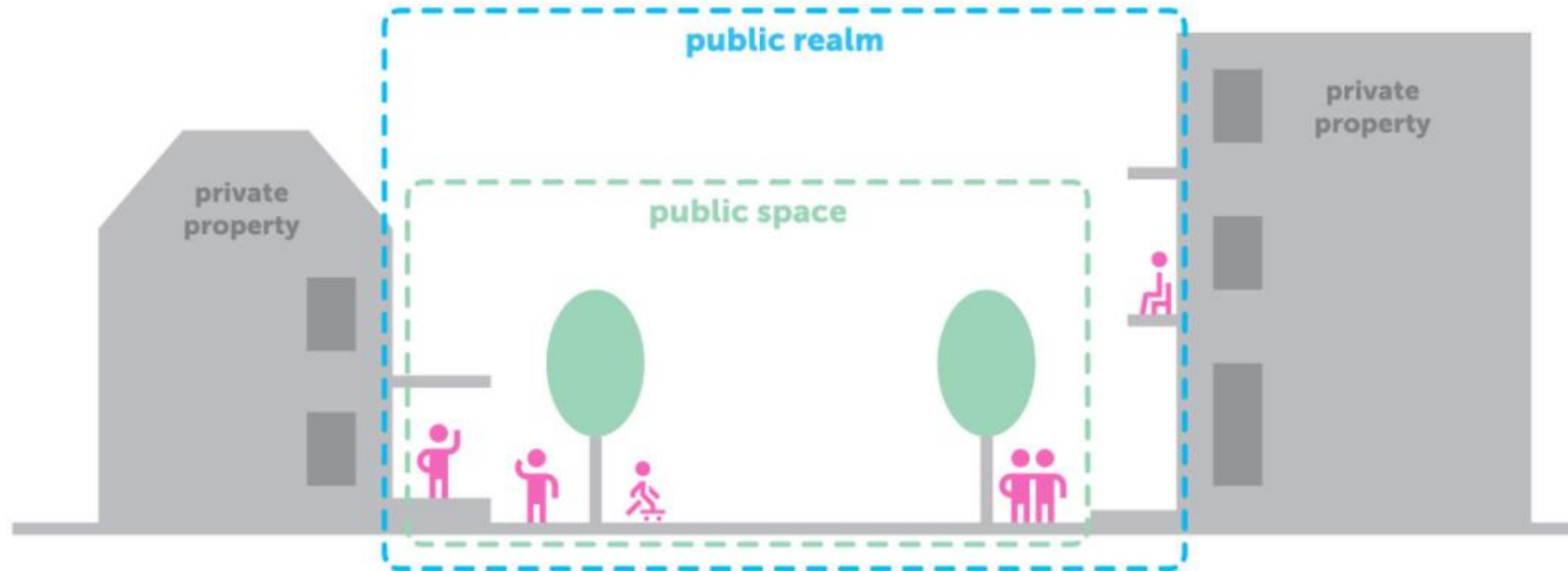
OP's Overarching Goal:

Enhance the beauty, equity, and livability of Washington, DC by reinforcing its historic design legacy and the diversity of its neighborhoods and centers, while improving the vitality, appearance, and function of streets and public spaces.





# What is the Public Realm?

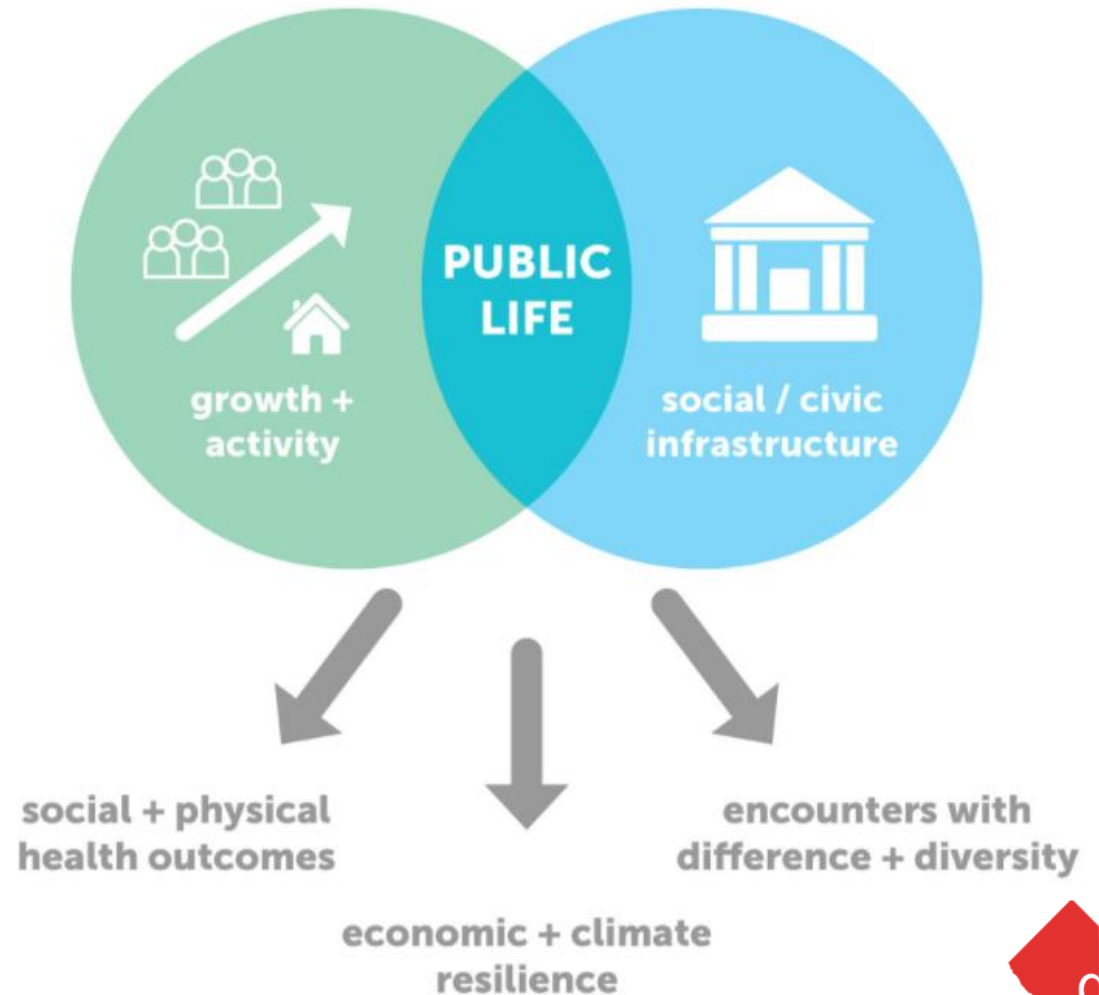


- public space:** area under public ownership, including parks and streets (porches and other elements sometimes project into public space).
- public realm:** area under public and private ownership that is publicly accessible or experienced from public space.
- public life:** what people create when they connect with each other outside their homes, workplaces, and cars.

# Why is a Vibrant Public Realm Important?

## A strong public realm:

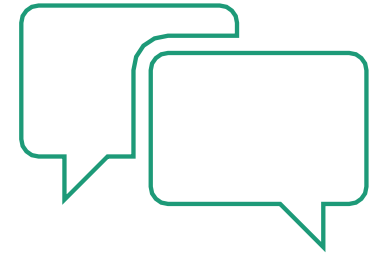
- Builds social capital
- Promotes better health outcomes
- Provides comfortable, accessible, inclusive, and diverse spaces to convene
- Encourages economic and retail activity
- Highlights culture and history



# How to Participate

1. Meeting chat will remain open throughout the conversation.
2. Select the “raise hand” feature or unmute to provide comment.
3. Complete the survey: [publicinput.com/PennAveSEVisioning](https://publicinput.com/PennAveSEVisioning)





# Post COVID-19, **what activities do you want to experience** along the corridor?



Anacostia Park



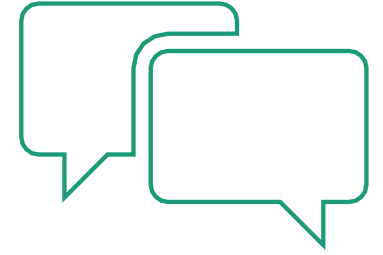
The Wharf



Adams Morgan





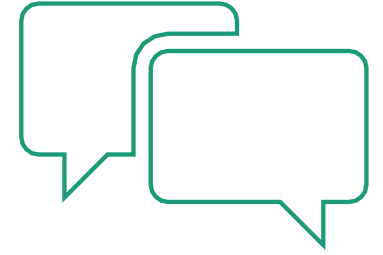


Now, think of the last **activity you did along the** Pennsylvania Avenue East corridor.

If you could have **improved one element** of that experience, what would you do?



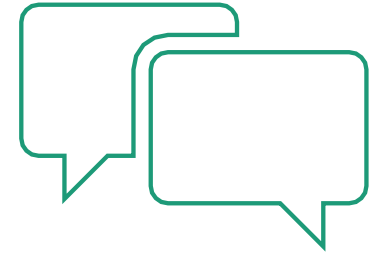




Share with us:

- Your **favorite view along the corridor**
- The **most important cultural or historic landmarks** in the community

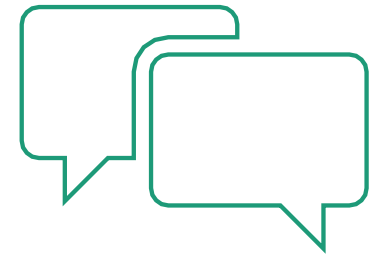




As you travel along the corridor and cross over the Sousa Bridge, **what if any changes to your surroundings do you experience** and how would you describe your level of comfort?

- What could be done to make the entire corridor – from SE to NW – feel more connected and/or unified?





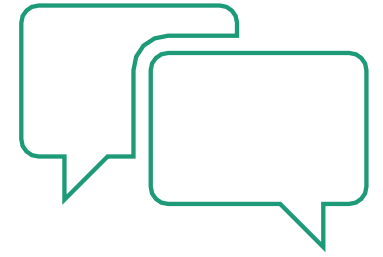
What **parks or public spaces** do you use and how do you use them?



- How would you like to use them differently?

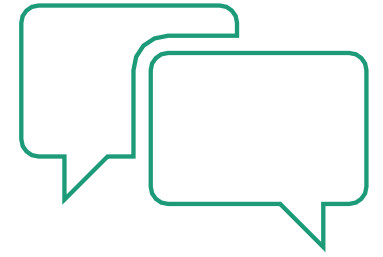






Consider how you currently use **parks and plazas, sidewalks, parking lanes, and/or other public spaces for shopping or entertainment**. Would you like to use these public spaces to **shop at year-round or seasonal markets**, outdoor dining, retail merchandising or other similar uses?





Consider public spaces and parks you've been to in the District, Maryland, or elsewhere. **What have you liked most about those public spaces and parks?**

- Based on those experiences, what, if anything would you like to see along Pennsylvania Avenue East?





# Meeting Recap

You shared...



# Community Visioning Conversation Schedule

## Vibrant Public Realm

May 26  
6:30-8:00 p.m.

## Transportation & Access

June 2  
6:30-8:00 p.m.

## Housing Affordability & Opportunities

June 9  
6:30-8:00 p.m.

## Retail & Economic Development

June 16  
6:30-8:00 p.m.

- Watch the broadcast online: [publicinput.com/PennAveSEPlan](https://publicinput.com/PennAveSEPlan), 'Events' tab
- Join the meetings online: [tinyurl.com/PennAveVisioning](https://tinyurl.com/PennAveVisioning)
- Join the meetings by phone: **202-860-2110 (meeting #: 160 489 9034)**



# Next Steps

## Visioning Phase

- Learn about existing challenges and aspirations for the future
- 4 Community Visioning Conversations
- 4 Community Visioning Surveys

## Analysis

- Review feedback from community surveys and conversations
- Identify existing government interventions
- Identify gaps in existing interventions
- Report back to community during **July 21 Townhall**

## Recommendation Development

- Share potential recommendations and identify gaps in analysis
- 4 Community Recommendation Discussions
- 4 Community Recommendation Surveys

**Next  
Townhall!**

Wednesday, July 21 @ 6:30pm  
[publicinput.com/PennAveSEPlan](https://publicinput.com/PennAveSEPlan)  
855-925-2801 (pin: 9252)



# Thank you!

**Thank you!** This is just the first of many opportunities to provide feedback.

## Next Steps:

- ✓ Register for the Plan
- ✓ Sign-up for Additional Visioning Workshops
- ✓ Mark your calendars for a July 21 Townhall
- ✓ Provide feedback online at: [publicinput.com/PennAveSEVisioning](https://publicinput.com/PennAveSEVisioning)



Project Website: [publicinput.com/PennAveSEPlan](https://publicinput.com/PennAveSEPlan)



Project Phone: 855-925-2801 (pin: 9252)



Project Email: [PennAveSEPlan@dc.gov](mailto:PennAveSEPlan@dc.gov)



Project Manager: [Faith.Broderick@dc.gov](mailto:Faith.Broderick@dc.gov)

